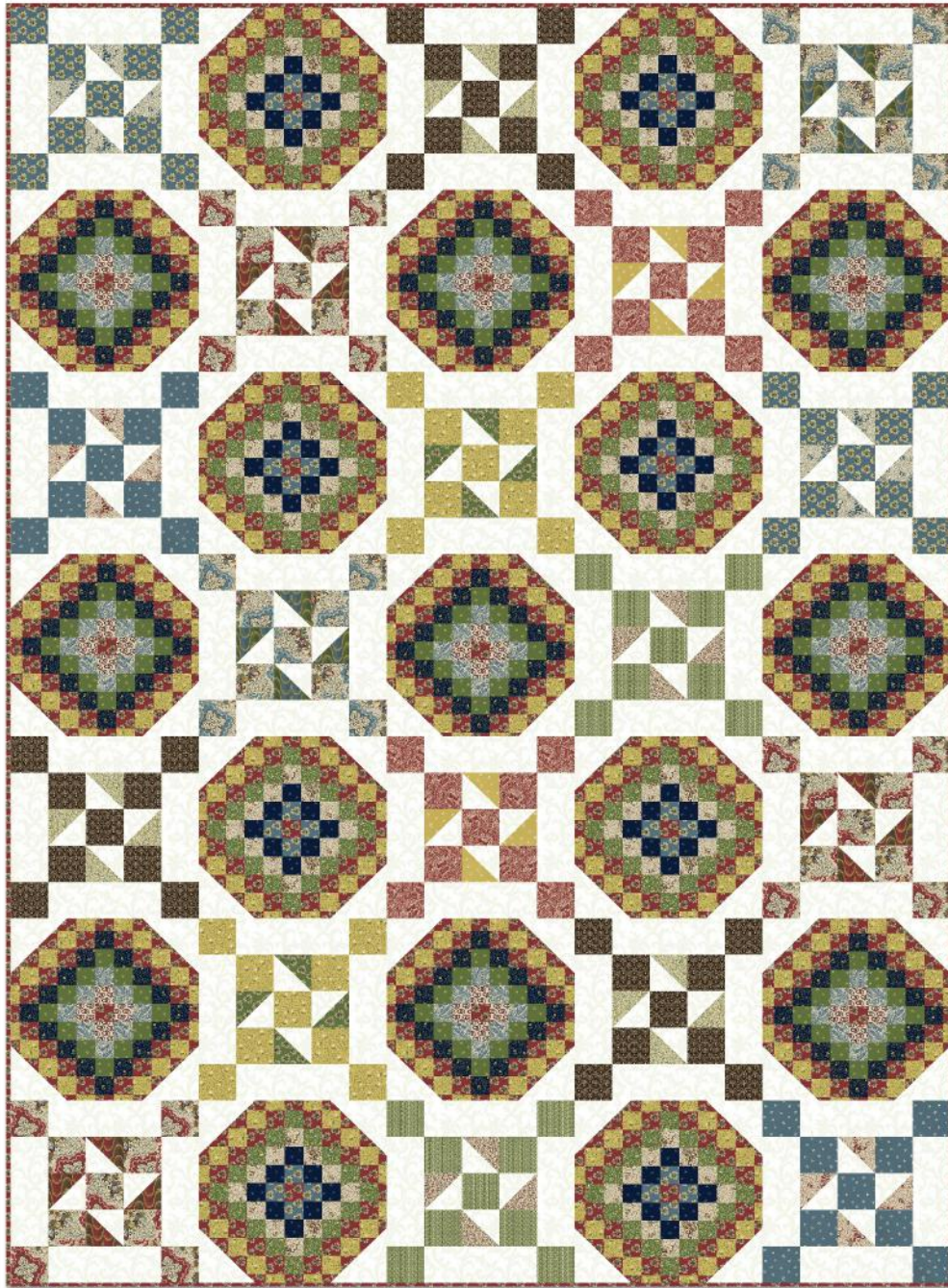


Medallion Stamps

Designed by Wendy Sheppard

Featuring Mary Koval's Postage Stamp Collection

Size: 50" x 70"



PLEASE NOTE: QUILT IMAGE SHOWN IS A DIGITAL REPRESENTATION, FABRIC LOOK MAY VARY ON YOUR PROJECT.
VISIT OUR *FREE PROJECT* SECTION ONLINE FOR ANY PATTERN UPDATES BEFORE STARTING QUILT PROJECT.

WINDHAM *W* **FABRICS**

Medallion Stamps

Page 2



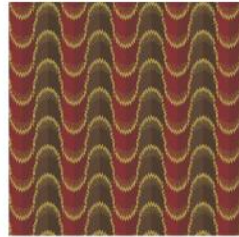
41667-X Multi



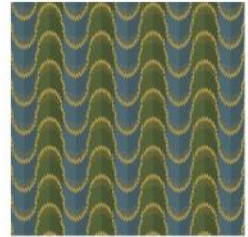
41668-1 Red



41668-2 Blue



41669-1 Red



41669-2 Blue



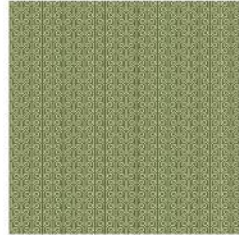
41671-2 Blue



41671-4 Green



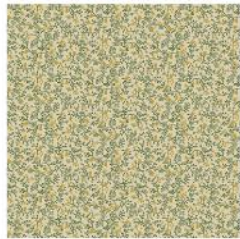
41672-1 Red



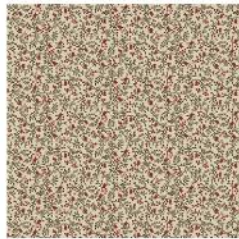
41670-4 Green



41672-5 Brown



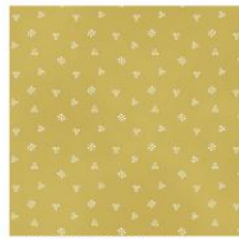
41676-4 Green



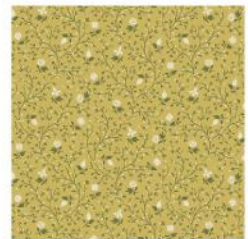
41676-5 Brown



41677-2 Blue



41677-6 Gold



41678-6 Gold

SKU / COLOR	YDS
32035-18 White *	1 7/8
41671-2 Blue	1/4
41668-2 Blue	1/4
41672-1 Red	1/4
41677-2 Blue	1/4
41678-6 Gold	1/4
41670-4 Green	1/4
41674-5 Brown	1/4
41668-1 Red	1/4

SKU / COLOR	YDS
41673-2 Blue	1/8
41669-2 Blue	1/8
41671-4 Green	1/8
41673-1 Red	1/8
41676-5 Brown	1/8
41677-6 Gold	1/8
41669-1 Red	1/8
41676-4 Green	1/8
41667-X Multi	1 5/8
Backing	1/8y

* From Mary's Blenders

56" x 76" piece of Batting

Optional: 1/2y red cluster print (41671-1 Red), cut into 2 1/4" strips.
Piece strips to make a continuous binding strip.

Medallion Stamps

Page 3

Cutting Instructions:

1. From blue cluster, blue wavy floral, red, blue small, gold toss flower, and green geometric prints, cut from each fabric for:

Star blocks -

Widthwise, 2 (2 1/2" x 42"). Subcut 18 (2 1/2" x 2 1/2") squares.

2. From brown fern and red wavy floral prints, cut from each fabric for:

Star blocks -

Widthwise, 2 (2 1/2" x 42"). Subcut 27 (2 1/2" x 2 1/2") squares.

3. From blue on white, blue green wave, green cluster, red on white, brown small floral and gold small prints, cut from each fabric for:

Star blocks -

Widthwise, 1 (3" x 42"). Subcut 4 (3" x 3") squares.

4. From red brown wave and green small floral prints, cut from each fabric for:

Star blocks -

Widthwise, 1 (3" x 42"). Subcut 6 (3" x 3") squares.

5. From white tonal, cut for:

Star blocks -

Widthwise, 3 (3" x 42"). Subcut 36 (3" x 3") squares.

Widthwise, 5 (6 1/2" x 42"). Subcut 72 (2 1/2" x 6 1/2") rectangles.

Snowball blocks -

Widthwise, 6 (3 1/2" x 42"). Subcut 68 (3 1/2" x 3 1/2") squares.

6. From focal print, cut for:

Snowball blocks -

Widthwise, 5 (10 1/2" x 42"). Subcut 17 (10 1/2" x 10 1/2") squares, centering the cross designs in the cut squares.

Constructing Star Block (using blue cluster block as example)

1. HST units. Draw a diagonal line on the wrong side of 1 (3" x 3") blue on white print square. Place square, right sides together, on 1 (3" x 3") white square. Sew 1/4" away from, and on right and left sides of drawn line. Cut along drawn line. Open and press to yield 2 HST units. Square up HST units, along 45-degree line on ruler, to measure 2 1/2" x 2 1/2" raw edge to raw edge.



Repeat to make a total of 4 HST units.

Medallion Stamps

Page 4

2. Block center. Arrange and sew together 2 (2 1/2" x 2 1/2") blue cluster squares and 1 HST unit to make a row, as shown. Repeat to make a total of 2 rows.



Sew 2 HST units to the opposite sides of 1 (2 1/2" x 2 1/2") blue cluster square.



Sew rows together to complete block center.



3. Framing pieces. Sew 2 (2 1/2" x 6 1/2") white rectangles to the opposite sides of block center.



Sew 2 (2 1/2" x 2 1/2") blue cluster squares to the opposite short sides of 1 (2 1/2" x 6 1/2") white rectangle to make a row. Repeat to make 2 rows.



Sew rows to the remaining opposite sides of block center to complete 1 block.



Medallion Stamps

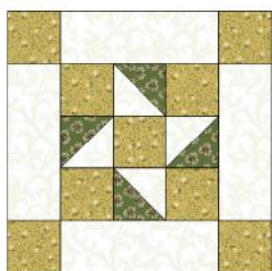
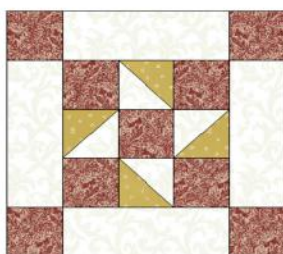
Page 5

4. Repeat to make a total number of blocks in the following colorways:

3 blocks



2 blocks

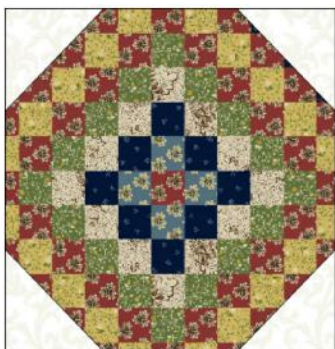


Constructing Snowball Block

1. Draw a diagonal line on the wrong side of 1 (3 1/2" x 3 1/2") white square. Place square, right sides together, at a corner of 1 (10 1/2" x 10 1/2") focal print square. Sew on drawn line. Trim 1/4" away from sewn line. Open and press to reveal white corner triangle. Repeat with three addition (3 1/2" x 3 1/2") white squares at the remaining corners of the same (10 1/2" x 10 1/2") focal print square to complete 1 snowball block.

Medallion Stamps

Page 6



2. Repeat to make a total of 17 blocks.

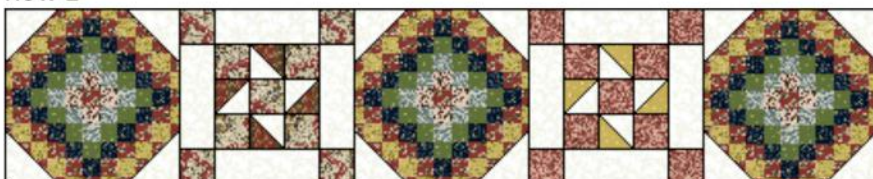
Quilt Top Assembly

1. Pieced rows. Arrange and sew blocks together into rows, as shown.

Row 1



Row 2



Row 3



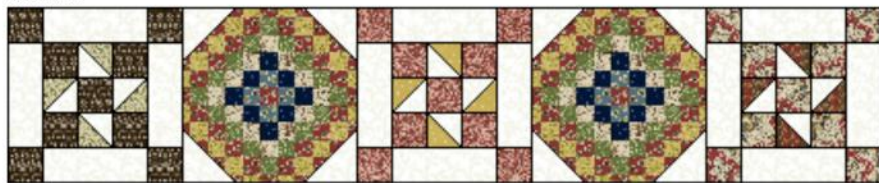
Row 4



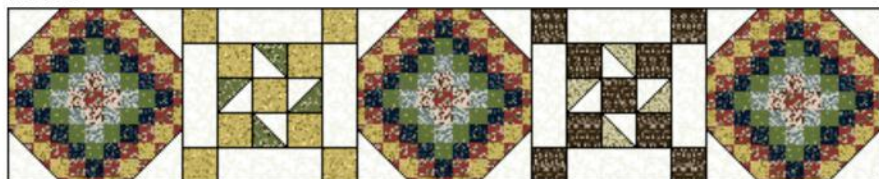
Medallion Stamps

Page 7

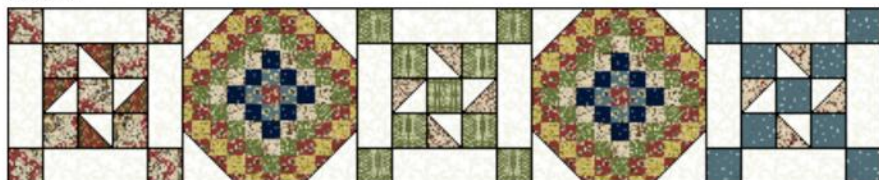
Row 5



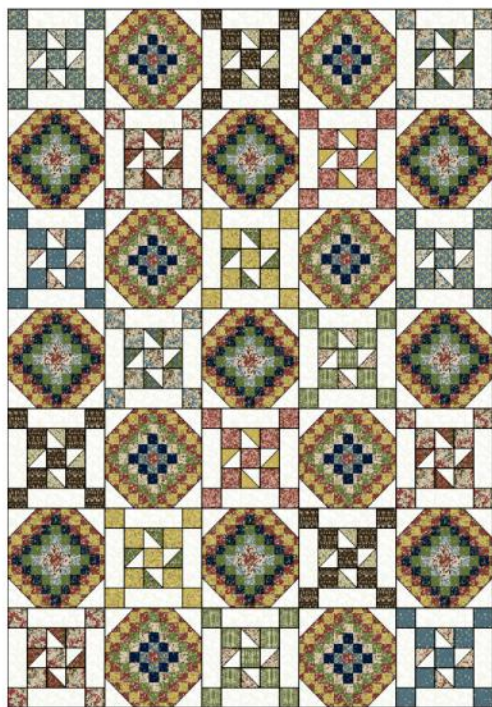
Row 6



Row 7



2. Sew rows together to complete quilt top.



Quilting Instructions:

1. With the backing fabric laying taut, place batting and then quilt top to form quilt sandwich. Baste sandwich. Quilt as desired. Bind to finish quilt.